

HISTORY OF ALVIN

*Pitt Lake, BC
V0M 1C0*

*Located 5 1/2 km from
Pitt Lake Acreages
NIHO.COM*



ALVIN THOMAS PATTERSON

Born in Parrsboro, Nova Scotia July 4, 1965 and settled in Alvin in 1901 as a logging contractor and farmer. Died July 20, 1942 in New Westminster.

ALVIN POST OFFICE

Opened October 1915 on L3174, G.S. Ward as Postmaster, closed March 1955 and relocated and reopened December 1955, four miles upriver on L2573.

POPULATION & INDUSTRIES

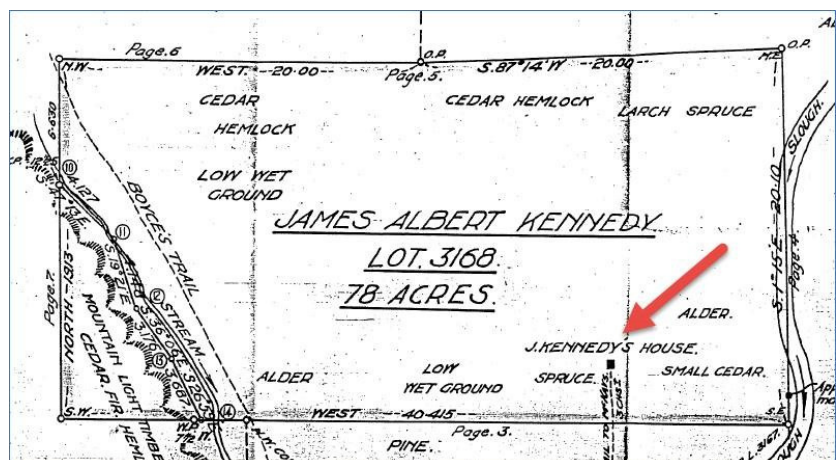
Alvin had at least 200 people logging and farming in the area. Most of the community had left by the early 1960's.

HOMESTEADS

LOCATED ON PITT LAKE ACREAGES

NW 4 (DL 3168)
James Albert Kennedy House

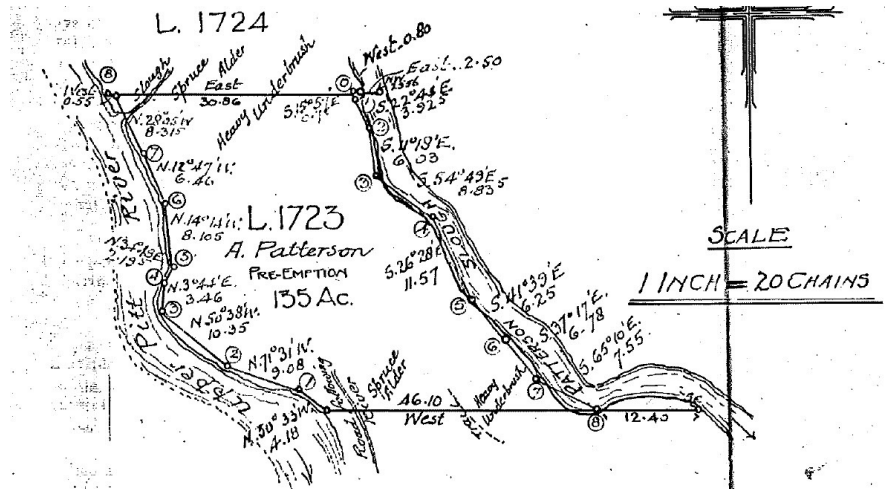
NW 5 (DL 3173)
Erick Eck's House
(see survey notes)



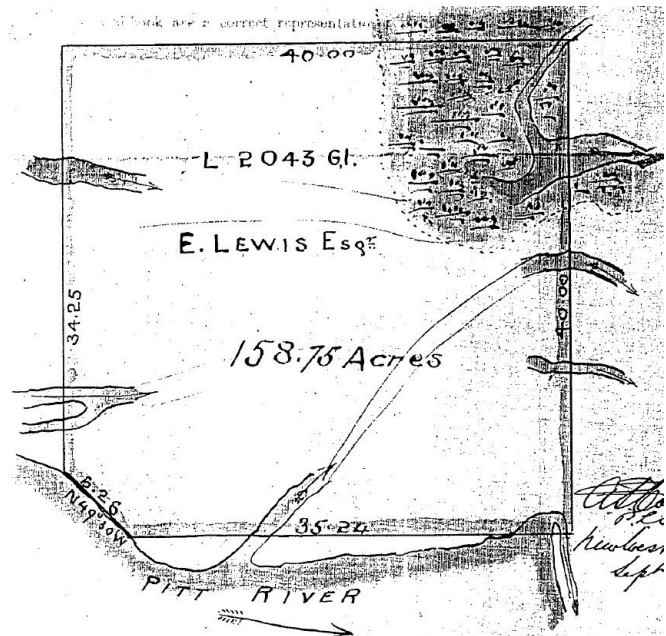
SURVEY NOTES

PITT LAKE ACREAGES, NIHO LAND & CATTLE

NW 1 (DL 1723)
A. Patterson
Pre-Emption
135 Acres

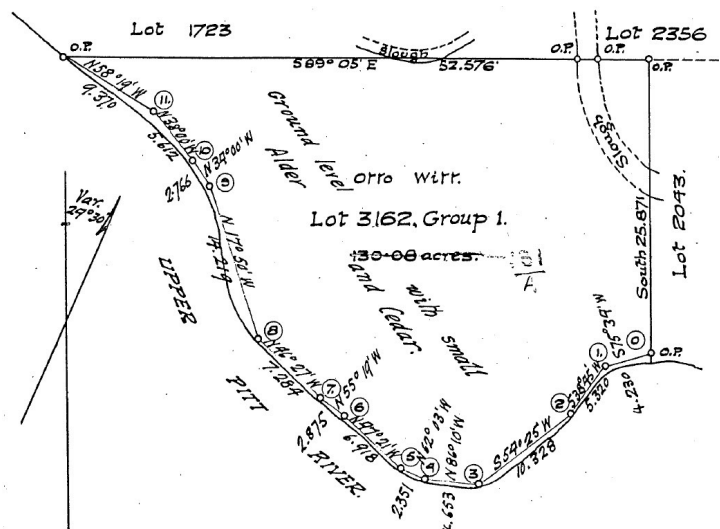


NW 2 (DL 2043)
E. Lewis
158.75 Acres



Steamboat
provided
transportation for
local industries:
logging, farming &
mining.

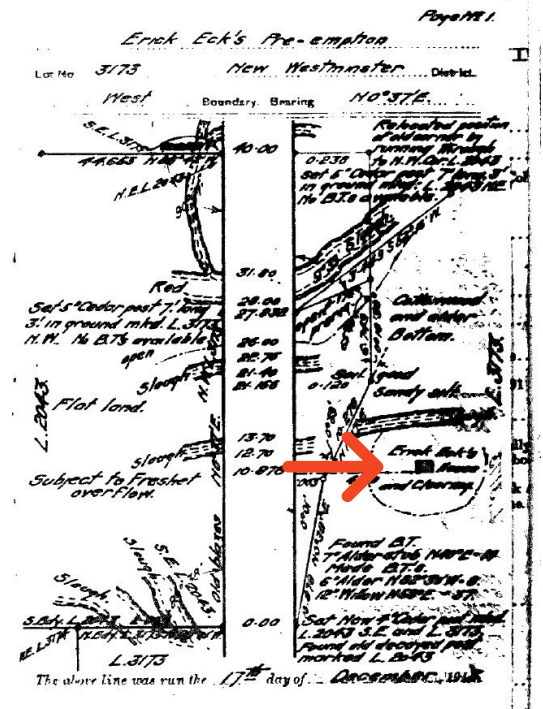
NW 3 (DL 3162)
130.08 Acres
Ground level with small
Alder and Cedar



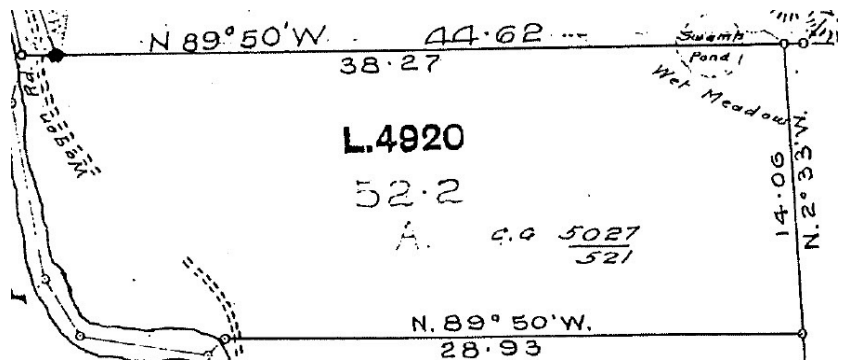
ORIGINAL SURVEY NOTES

PITT LAKE ACREAGES, NIHO LAND & CATTLE

NW 5 (DL 3173)
Erick Eck's House
Pre-Emption
Crabapple Orchard

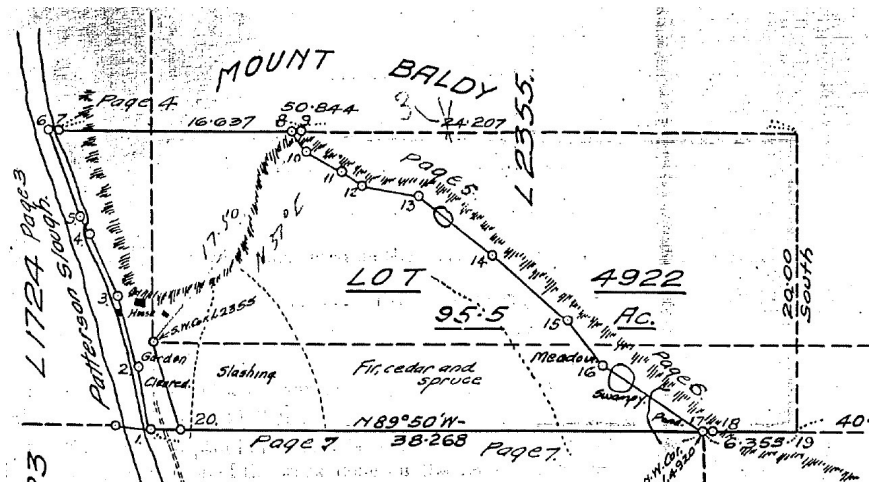


NW 6 (DL 4920)
52.2 Acres
Garden and Clearing



“Strawberries & potatoes were grown & taken to the Vancouver Market”

NW 7 (DL 4922)
95.5 Acres
Chicken House,
Cleared Garden



ABOUT ALVIN

Post Office, Settlement & Farming

The upper Pitt Lake area was settled in the early 1900's, with about 40 people homesteading the area around Alvin. Wrigley's British Columbia Directory in 1922 described Alvin as "a post office and settlement in Dewdney Provincial Electoral District, reached by steamboat on Pitt Lake, and distant 28 miles from Coquitlam, on the CPR, the nearest railway and telegraph point.

Local industries: Lumbering, farming and mining. Some 800 acres were thrown open for settlement.

Of the 22 people listed in the 1922 directory, most participated in the local industries in multiple ways. 14 were loggers, 15 were farmers, only 1 was a miner, and 2 were Dominion administrative men.

Alvin, which was first identified in the BC Gazetteer as a post office in 1930, originally existed around the north end of Pitt Lake. BC Forest Products moved the town to 4 miles above the head of Pitt Lake in 1955, with the BC Gazetteer showing an altered application showing the move on June 4, 1959. The post office would reopen in December of that year, and remain open until at least 1982.

The town had a school, a town hall, a swimming pool, tennis court and a hotel. After the residents of Alvin moved away (by the early 1960's), the valley became primarily a logging operation, with employees residing in houses or bunk houses provided by the company. Mail, groceries and other necessities were brought up by boat 3 times a week. Only a few cabin owners remained in the area.

In the 1980's, Fletcher Challenge bulldozed the town, with JS Jones Timber (now Teal-Jones) taking over the remaining logging operations in 1993.

Sources:

Wrigley's British Columbia Directory

BC Geographical Names: Alvin

Pitt River Lodge History

Letter: M.J Boland to J.G Byth, Sept 19, 1968 - Pitt Meadows Museum

Wikipedia: Alvin, BC

ALVIN

a post office and settlement in Dewdney Provincial Electoral District, in Upper Pitt Valley, reached by steamboat on Pitt Lake, and distant 28 miles from Coquitlam, on the C.P.R., the nearest railway and telegraph point. Dominion Government hatchery here. Local industries: Lumbering, farming and mining. Population 40. Some 800 acres have been thrown open for settlement.

Armstrong W H general store and postmaster

Chisholm Geo logging

Cox Marcus farming mining

Davidson A G farming

Davidson A L farming

Dom Govt Hatchery (Pitt Lake) J

McIsaac in charge

Eck John mixed farming

Eck Peter mixed farming

Gardiner F W farming

Haagenson Edw mixed farming

Haagenson Ole mixed farming

Kitsall Dave logging

McCauley Geo farming

McIsaac John in charge Pitt Lake

Hatchery

McIsaac Malcolm farming

Patterson Alvin T farming logging

Peters Chas R farming logging

Peters Thos J farming logging

Pitt Lake Hatchery J McIsaac in ch

Reid I A farming

Ryan Thos logging

Swanson G logging

Thompson E farming

Fruelove Wm farming logging

Uphoff W C logging

Amar Point, on the west side of

Bute Inlet.

Amazon Creek, runs from Pictoria

Lake into Alice Lake, in Rupert Dis-

trict, Vancouver Island.

Wrigley's British Columbia Directory 1922

In the early 1900's Alvin was BC's first sockeye salmon hatchery operated by the Corder Family until the 1930's.

The Upper Pitt River still today is known as one of the top fishing rivers in Canada.